

A world map with a blue and green color scheme, showing continents and oceans. The map is slightly faded and serves as a background for the text.

**AN ERA OF DIGITAL
CONSERVATION OF WILDLIFE:
HANDS-ON TRAINING ON GEOGRAPHIC
INFORMATION SYSTEM (GIS)-BASED
CONSERVATION HOTSPOTS MAPPING**

**Arranged by
Department of Biological Sciences, UVAS Lahore
in collaboration with
Punjab Wildlife and Parks Department, Lahore**

Timing: 9:30 am- 2:30 pm

Date: 7th March , 2024

Venue: Amphitheatre , Pasha Block, UVAS



**UNIVERSITY OF VETERINARY AND
ANIMAL SCIENCES, LAHORE**

PATRON

PROF. DR. HABIB-UR-REHMAN

CHAIRPERSON

DR. MUBASHRAH MUNIR

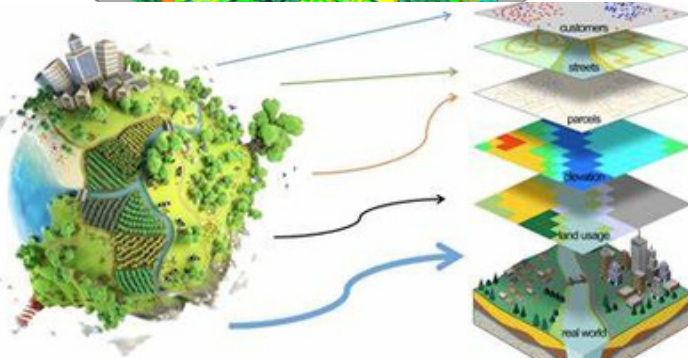
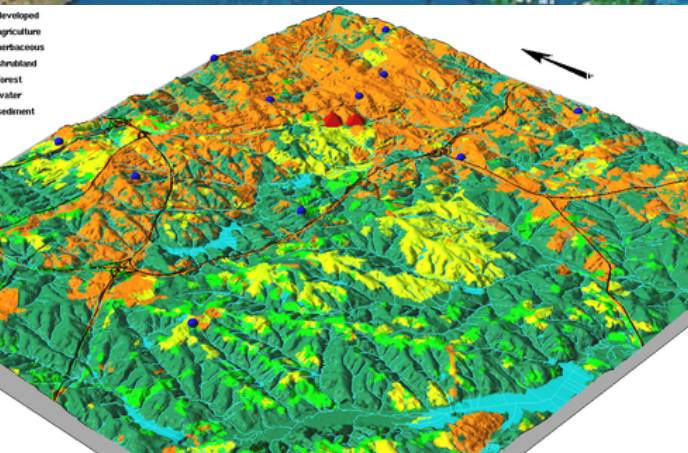
ORGANIZERS

**PROF. DR. IMTIAZ RABBANI
(PROGRAM COORDINATOR,
DEPARTMENT OF BIOLOGICAL
SCIENCES, UVAS, LAHORE)**

**MS. MARYAM ABDUL SATTAR
(VISITING LECTURER, DEPARTMENT
OF BIOLOGICAL SCIENCES, UVAS,
LAHORE)**

RESISTRATION FEE: RS 500/-

TRAINING SCHEDULE



6th March 2024

Time	Flow of Training	Resource Person
	Opening Ceremony	
9:40-9:45 am	Guest to be seated	
9:45-9:50	Recitation from the Holy Quran	
9:50-9:55	Introduction	
9:55-10:00	Introductory Remarks by the Chairperson	Dr. Mubashrah Munir
10:00-10:05	Welcome Address by Dean of Faculty of Bio-Sciences	Prof. Dr. Habib ur Rehman
10:05-10:20	Introduction to Digital Conservation of Wildlife	Ms. Maryam Abdul Sattar Faculty Member Department of Biological Sciences UVAS, Lahore
10:20-10:50	Introduction and Acquainting of GPS(Global positioning system) and GPS devices in digital conservation of wildlife	Dr. Fasiha Qurashi Faculty Member Department of Biological Sciences UVAS, Lahore
10:50-11:20	Role of Remote Sensing and Geographic Information System(GIS) in Digital Conservation of Wildlife	Ms. Wajeeha Iftikhar Remote Sensing Analyst Punjab Wildlife and Parks Department
11:20-12:00pm	Tea Break	
12:00-2:00	Hands-on Training Session ArcGIS Software Interface	
	<ul style="list-style-type: none"> • Importance of GIS-based Map 	
	<ul style="list-style-type: none"> • How to read a Map and its elements 	
	<ul style="list-style-type: none"> • Multiple Map Templates, interpretation and visual analysis 	
	<ul style="list-style-type: none"> • Arc Map Interface • GIS-based Map generation 	
2:00-2:20	Student Assessment	
2:20-2:30	Concluding Ceremony	